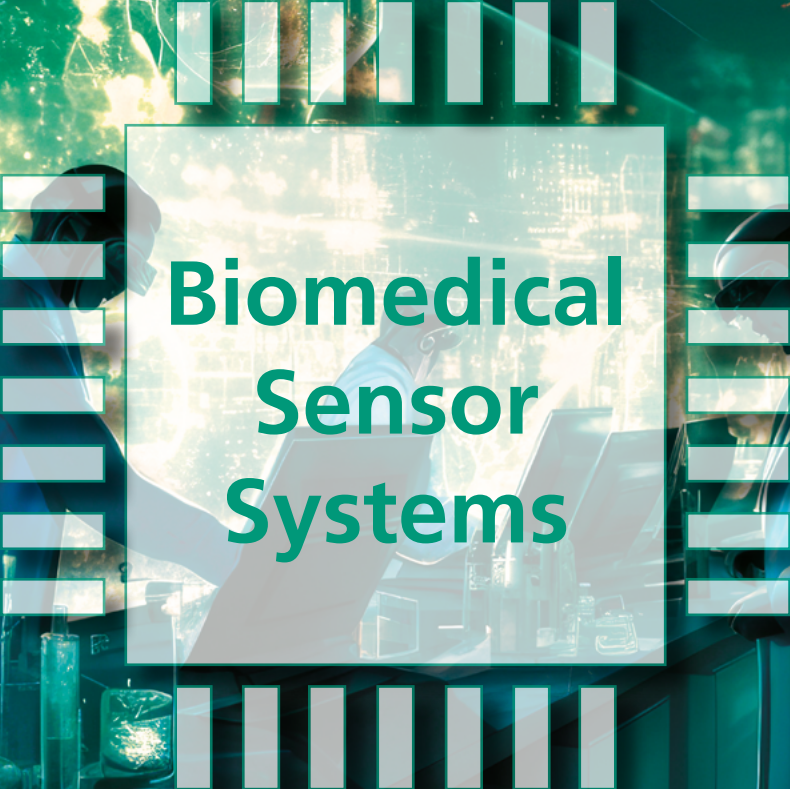




**Fraunhofer**  
IMS

A decorative graphic consisting of two horizontal rows of seven white rectangular bars each, positioned above and below the central text box. The background of the entire page is a futuristic laboratory with glowing green and blue lights, digital data overlays, and two scientists in white lab coats working at a workstation.

# Biomedical Sensor Systems

# Business Unit Health

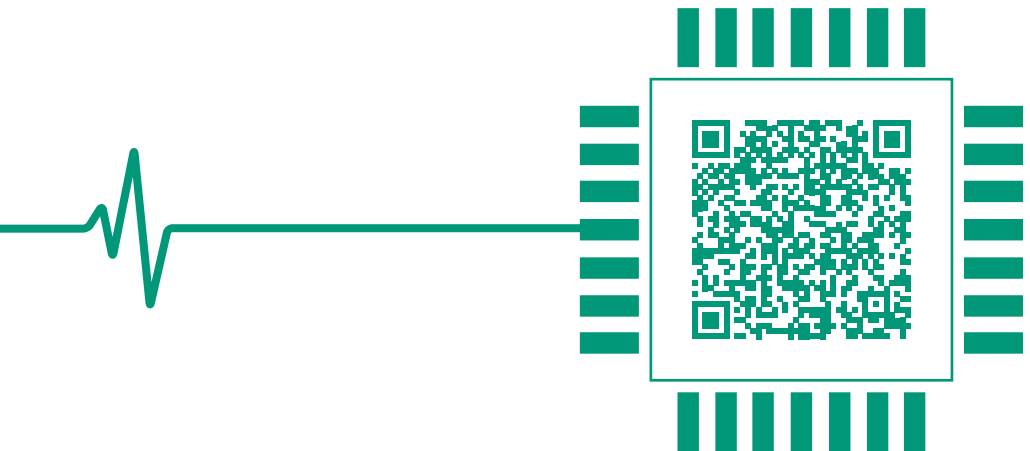
## Affordable health through intelligent medicine

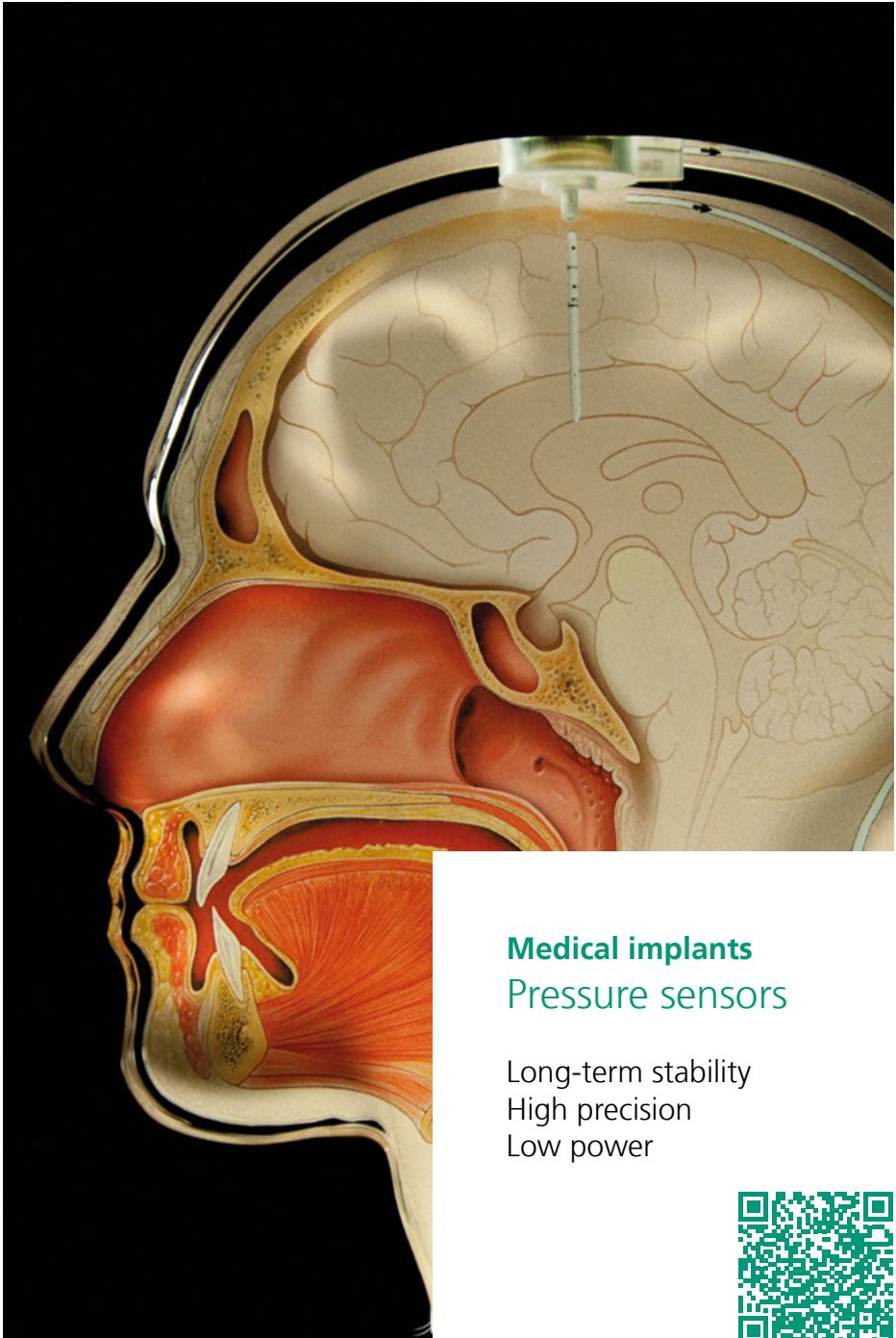
Highly-sensitive, smart medical sensors for care, hospitals and at home to improve prevention, diagnostics and therapy.



# Biomedical Sensor Systems at Fraunhofer IMS

We develop smart biomedical sensor systems for medical implants, in-situ diagnostics and non-invasive healthcare applications. These are specifically tailored to the requirements of the target application in the fields of medicine, life science, biotechnology, food, pharmaceuticals, and environmental technology. Smart sensors detect health-relevant information in a non-contact manner as wearables, medical implants, or diagnostic devices with high sensitivity. They provide diagnostic support, suggest preventive measures, and initiate targeted therapies.





## Medical implants Pressure sensors

Long-term stability  
High precision  
Low power

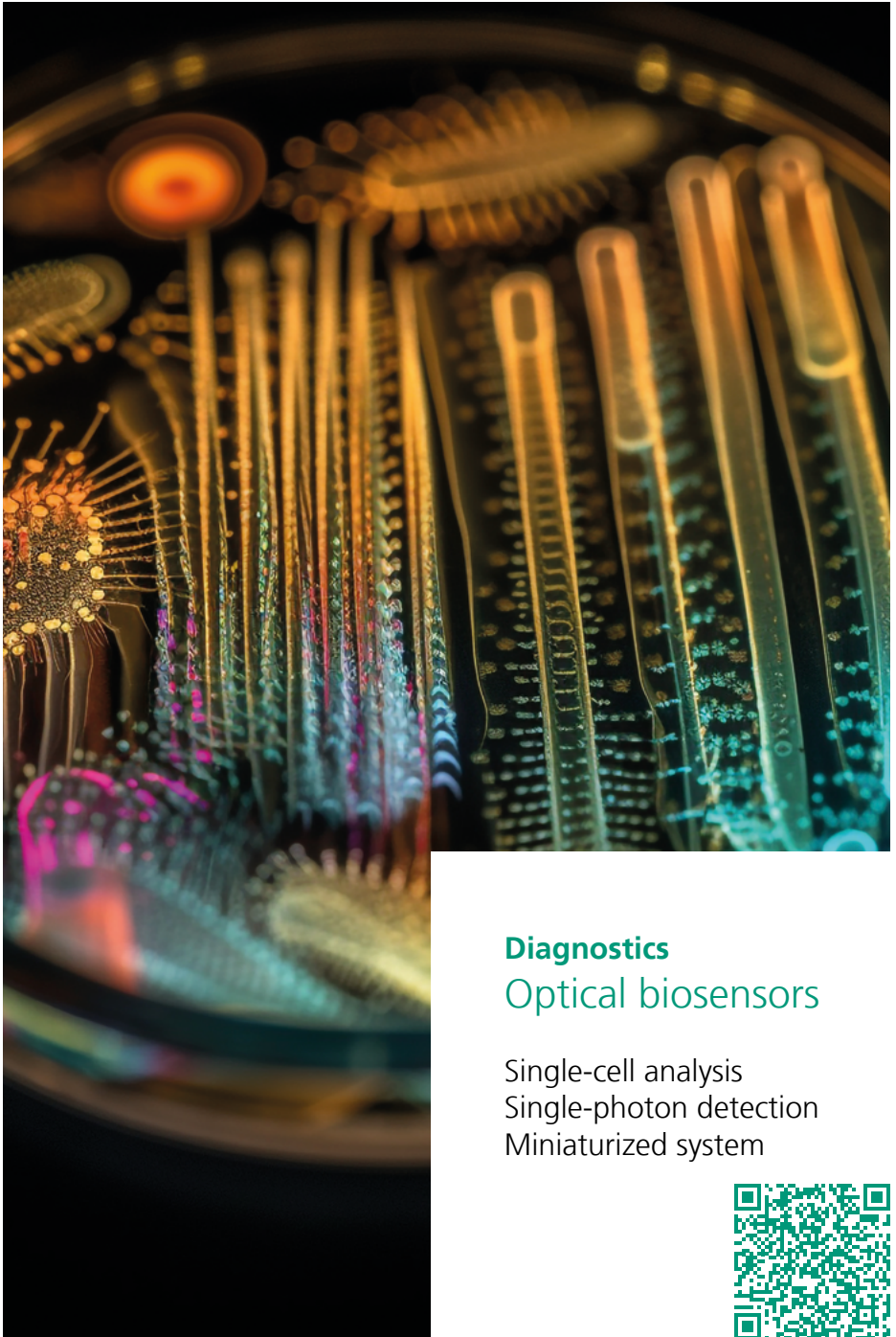




## Non-invasive healthcare Blood pressure scale

Embedded AI algorithms  
Calibration-free  
Easy-to-use

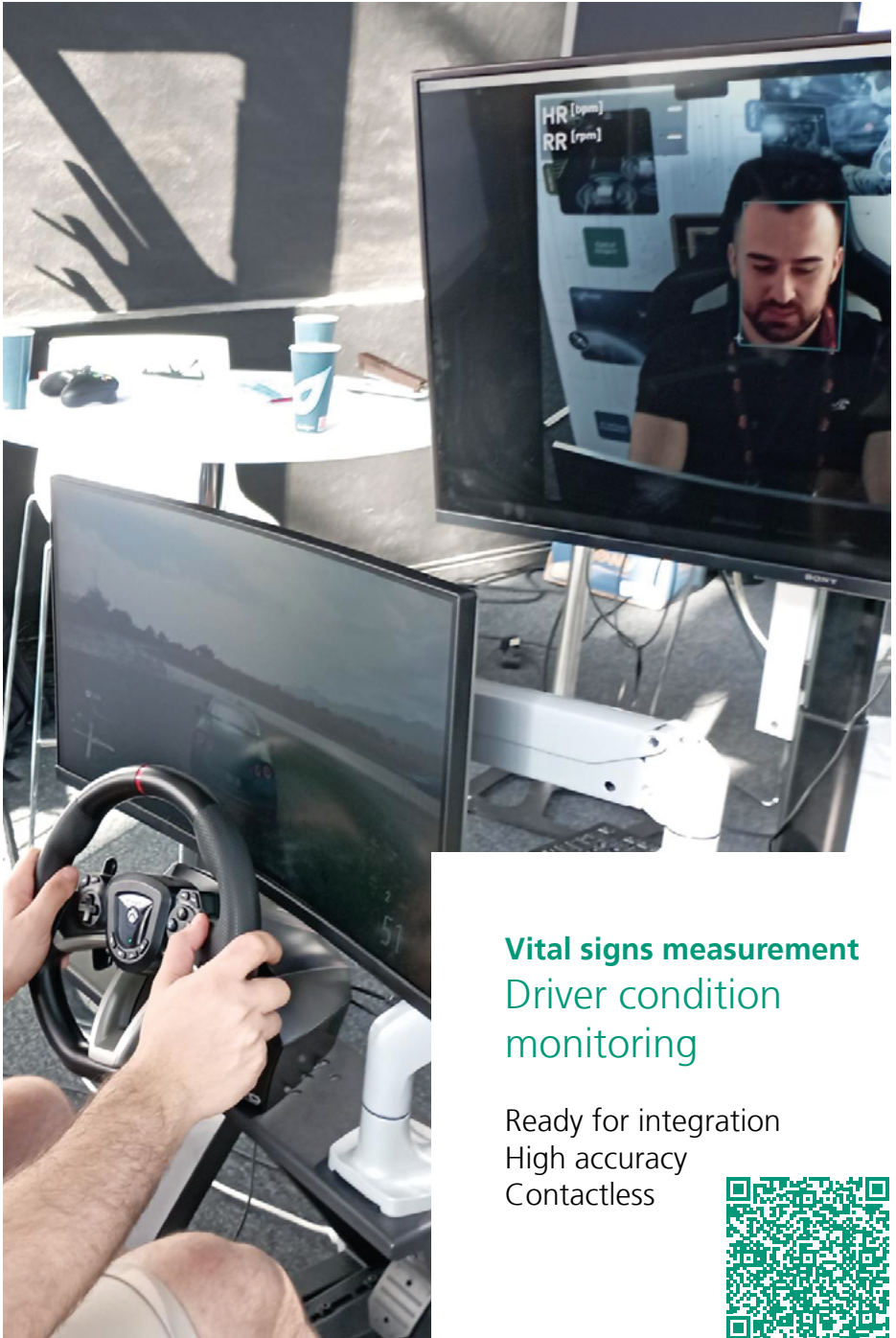




## **Diagnostics** Optical biosensors

Single-cell analysis  
Single-photon detection  
Miniaturized system





**Vital signs measurement**  
Driver condition  
monitoring

Ready for integration  
High accuracy  
Contactless





## Contact

### **Business Unit Health**

sales@ims.fraunhofer.de

Fraunhofer Institute for Microelectronic  
Circuits and Systems IMS  
Finkenstr. 61  
47057 Duisburg  
[www.ims.fraunhofer.de/en.html](http://www.ims.fraunhofer.de/en.html)

### **Copyright**

SUPHANSA/Adobe Stock (Title)  
Luca/Adobe Stock (Optical biosensors)